

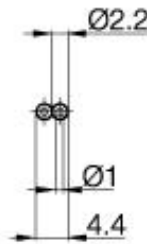
Accessories: Fiberoptic BFO D22-LD-EAK-10-20

Common Data

Version	Duplex fiber optic
Usable with	on BOS 15K..., BOS 20K..., BOS 74K..
Ambient temperature	-40°C...+85°C

Mechanical Data

Measurements WxHxD or Dia x D	20m Roll
Material	PE jacket
Mounting	with clamping on $\bar{\text{I}}2.2\text{mm}$
Diameter of glass fiber bundle	2x1
Max. pull force on cable	5
Least bending radius	30



PX0986

Remarks

Max. Attenuation for 660nm $\leq 250\text{dB/km}$

Datasheet number::

Definitions see general catalog.
If not otherwise noted, ratings according to
IEC 60947-5-2 (DIN EN60947-5-2)

Balluff GmbH
Schurwaldstrasse 9
73765 Neuhausen a.d.F.
Phone (07158) 173-0 Fax (07158) 5010

Datenblatt by CD-ROM - 04/2007

BALLUFF
sensors worldwide